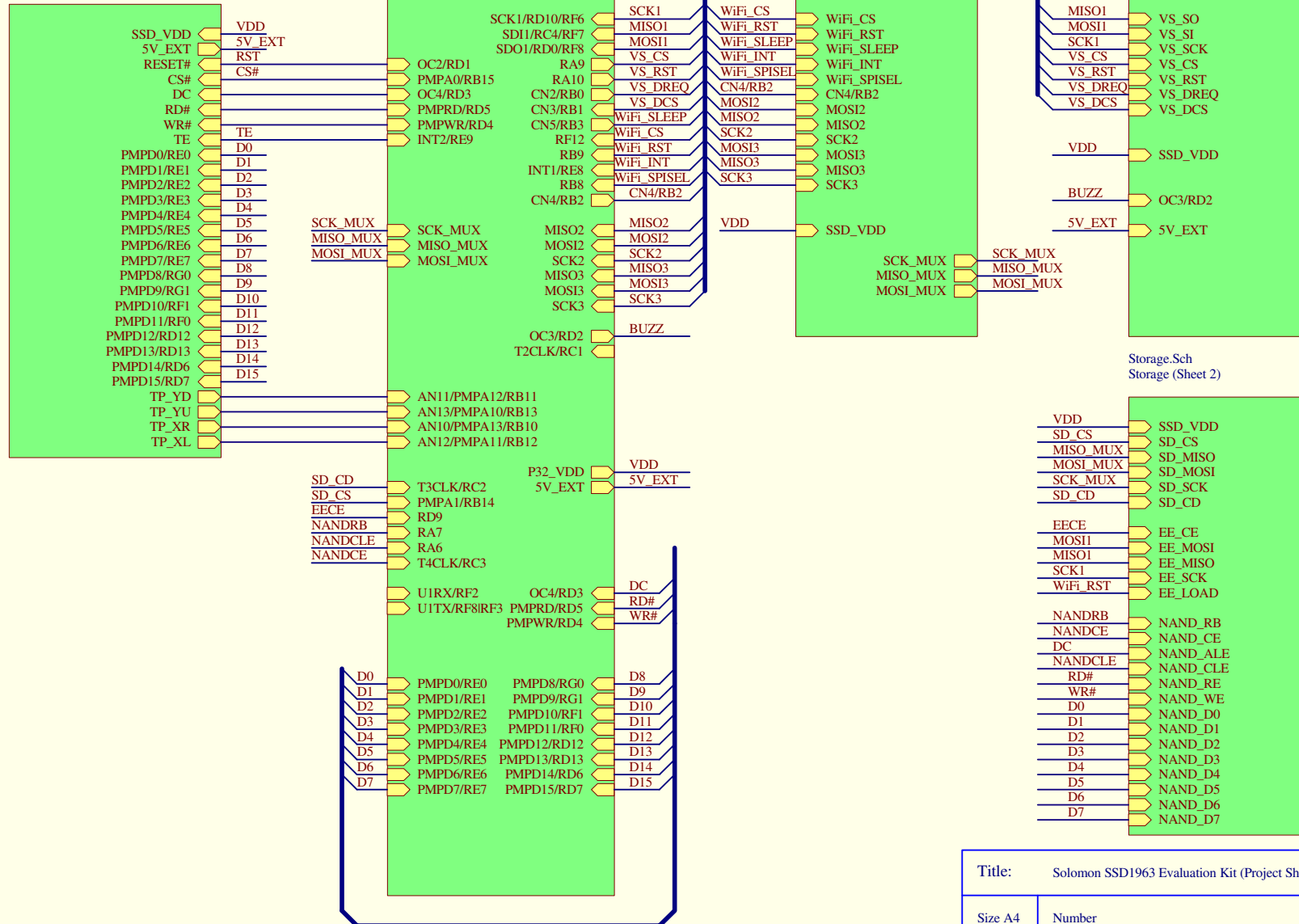


SSD1963.Sch  
SSD1963 (Sheet 6)

PIC32STK.Sch  
PIC32STK Interface (Sheet 3)

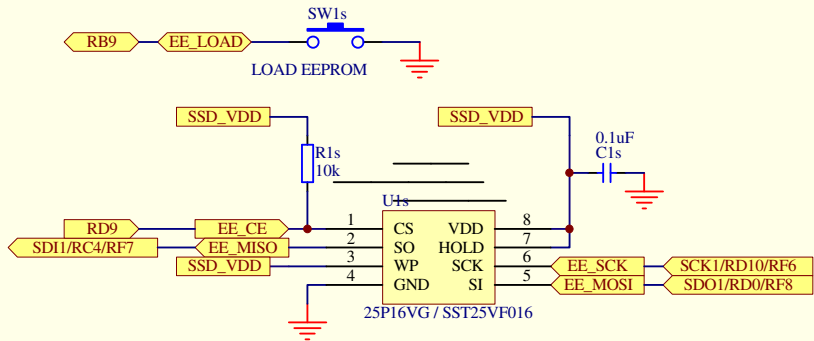
Wifi.Sch  
WiFi module (Sheet 4)

Audio.Sch  
VS1003B Interface (Sheet 5)



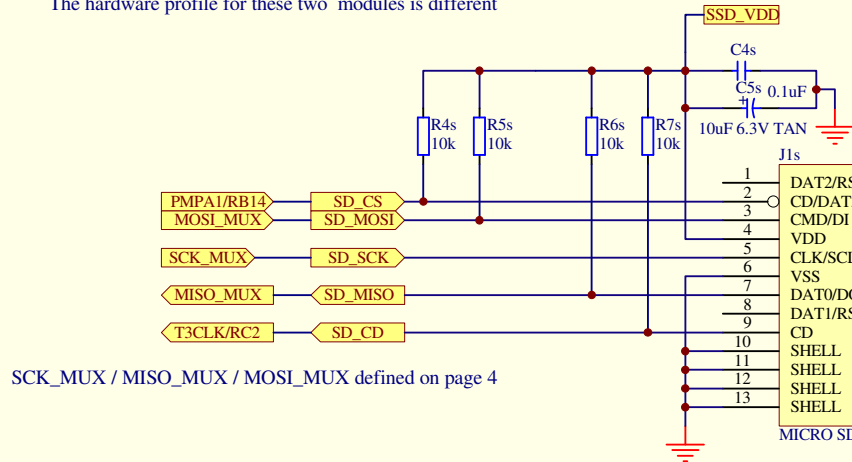
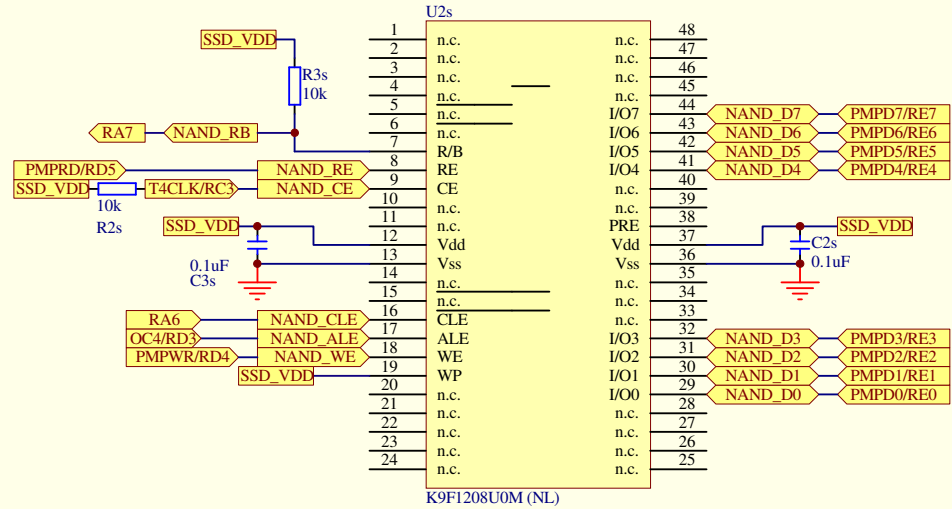
Title: Solomon SSD1963 Evaluation Kit (Project Sheet)		
Size A4	Number	Revision 4.1
Date: 19th July 2012		Sheet 1 of 6

## EEPROM and NANDFLASH Interface



	PIC32 GP SK	PIC32_USB_SK	PIC32_ETH_SK
EE_CE	RD9	RD9	RD9
EE_MISO	SDI1/RF7	SDI1/RC4	SDI1/RC4
EE_SCK	SCK1/RF6	SCK1/RD10	SCK1/RD10
EE_MOSI	SDO1/RF8	SDO1/RD0	SDO1/RD0

SPI1 module maps differently on PIC32 GP SK from PIC32 USB/ETH SK. The hardware profile for these two modules is different



SCK\_MUX / MISO\_MUX / MOSI\_MUX defined on page 4

Title: EEPROM and MicroSD card socket		
Size A4	Number	Revision 4.1
Date: 19th July 2012	Sheet 2 of 6	

D

C

B

A

D

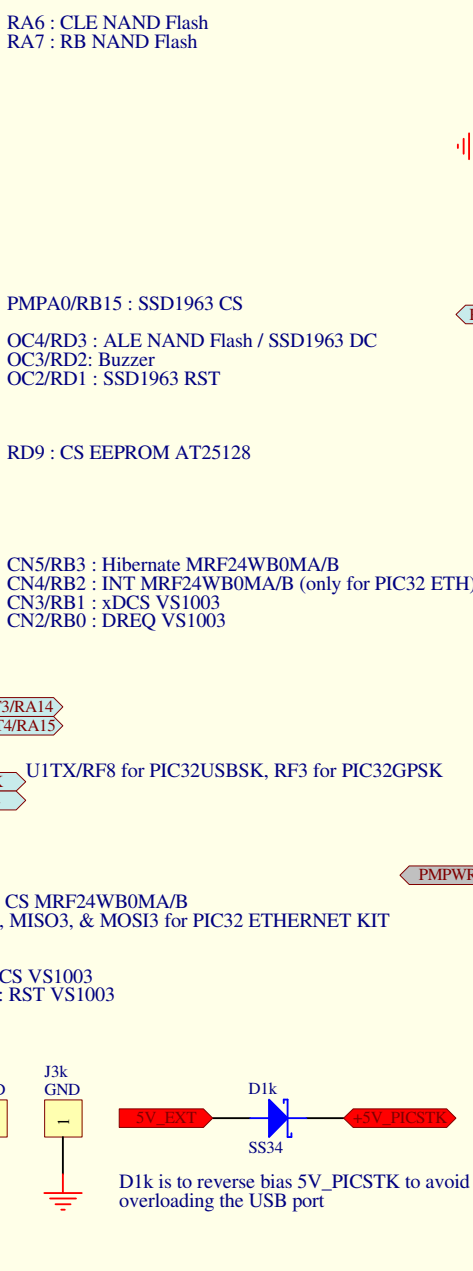
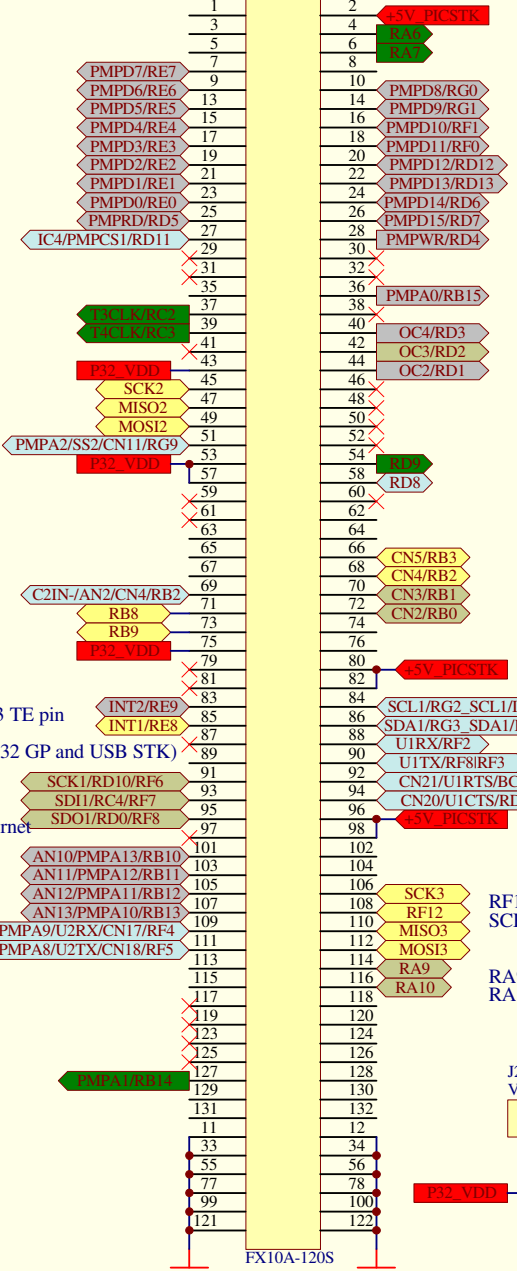
C

B

A

J1k

J4k



RC2 : CD MicroSD CARD  
RC3 : CE NAND Flash

SCK2 : SCK MRF24WB0MA/B  
MISO2 : MISO MRF24WB0MA/B  
MOSI2 : MOSI MRF24WB0MA/B

RB8 : SPISEL MRF24WB0MA/B  
RB9 : RST MRF24WB0MA/B

INT2/RE9 (GP / USB SK only): SSD1963 TE pin  
INT1/RE8 : INT MRF24WB0MA/B (PIC32 GP and USB STK)

SPI1 :  
RF6,7,8 for PIC32MX Starter Kit  
RD10,RC4, RD0 for PIC32MX USB/ethernet

AN10:13 ADC for TFT Touch Panel

RB14 : CS MicroSD CARD

RA6 : CLE NAND Flash  
RA7 : RB NAND Flash

PMPA0/RB15 : SSD1963 CS  
OC4/RD3 : ALE NAND Flash / SSD1963 DC  
OC3/RD2: Buzzer  
OC2/RD1 : SSD1963 RST

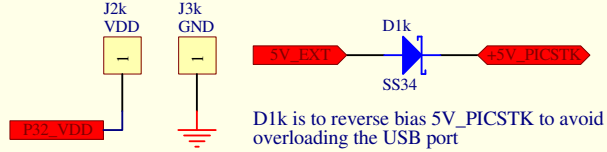
RD9 : CS EEPROM AT25128

CN5/RB3 : Hibernate MRF24WB0MA/B  
CN4/RB2 : INT MRF24WB0MA/B (only for PIC32 ETH)  
CN3/RB1 : xDCS VS1003  
CN2/RB0 : DREQ VS1003

U1TX/RF8 for PIC32USBSK, RF3 for PIC32GPSK

RF12: CS MRF24WB0MA/B  
SCK3, MISO3, & MOSI3 for PIC32 ETHERNET KIT

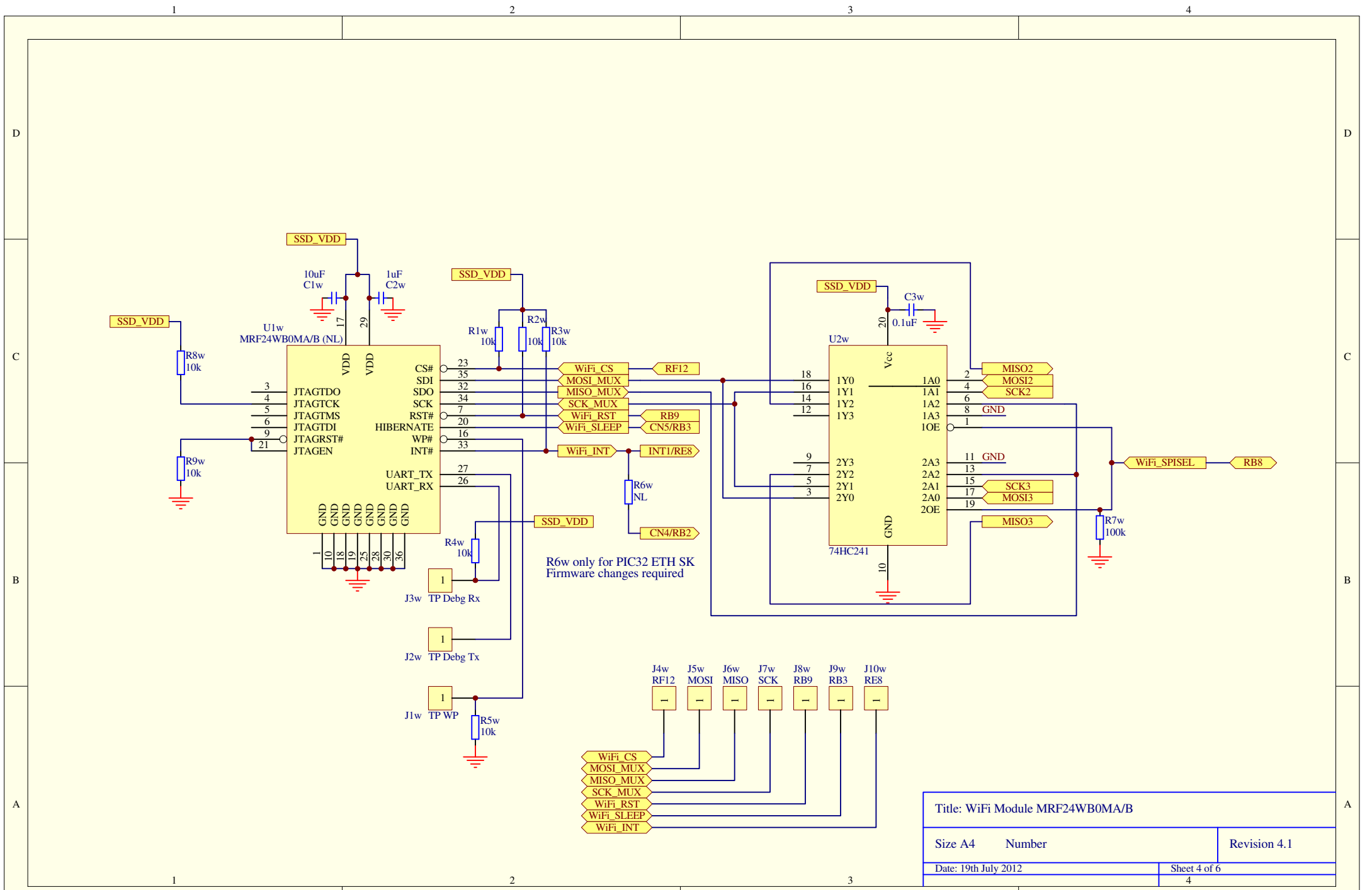
RA9: CS VS1003  
RA10: RST VS1003



MEC1-160-02-X-D-EMX

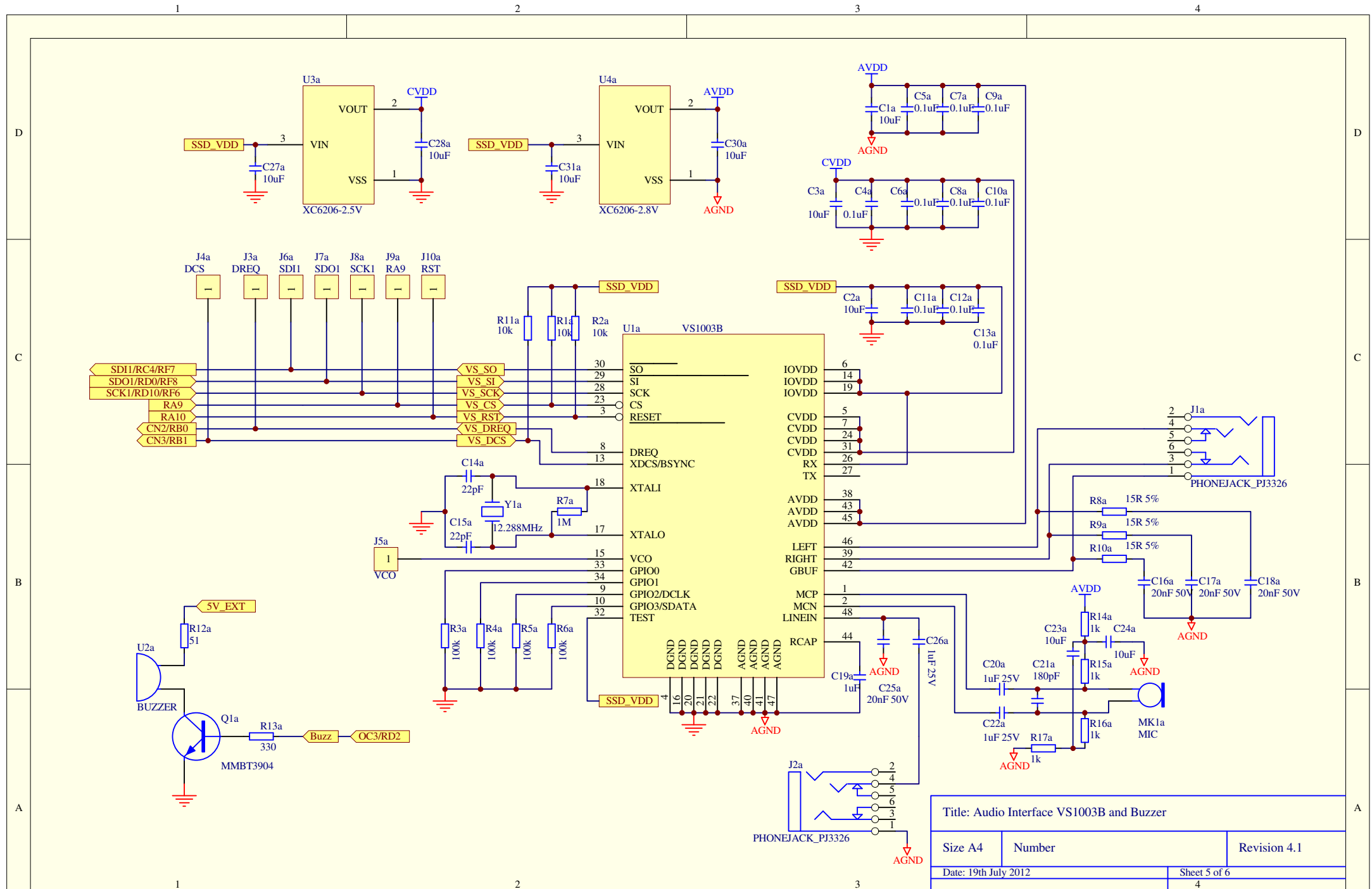
Title: FX10A-120S Socket for PIC32 Starter Kits and expansion ports

Size A4	Number	Revision 4.1
Date: 19th July 2012		Sheet 3 of 6

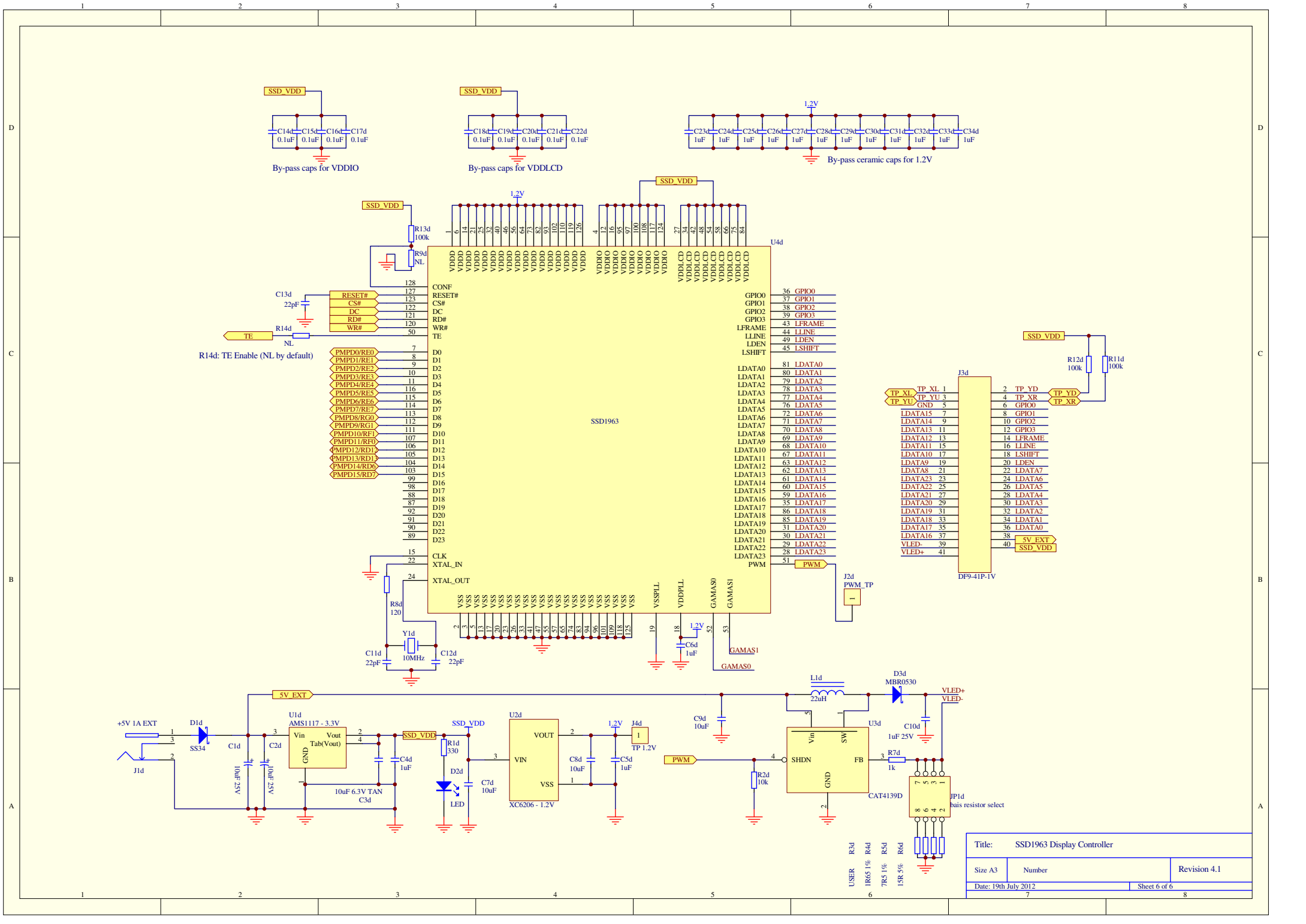


R6w only for PIC32 ETH SK  
Firmware changes required

Title: WiFi Module MRF24WB0MA/B		
Size A4	Number	Revision 4.1
Date: 19th July 2012		Sheet 4 of 6



Title: Audio Interface VS1003B and Buzzer		
Size A4	Number	Revision 4.1
Date: 19th July 2012		Sheet 5 of 6



Title: SSD1963 Display Controller		
Size A3	Number	Revision 4.1
Date: 19th July 2012	Sheet 6 of 6	